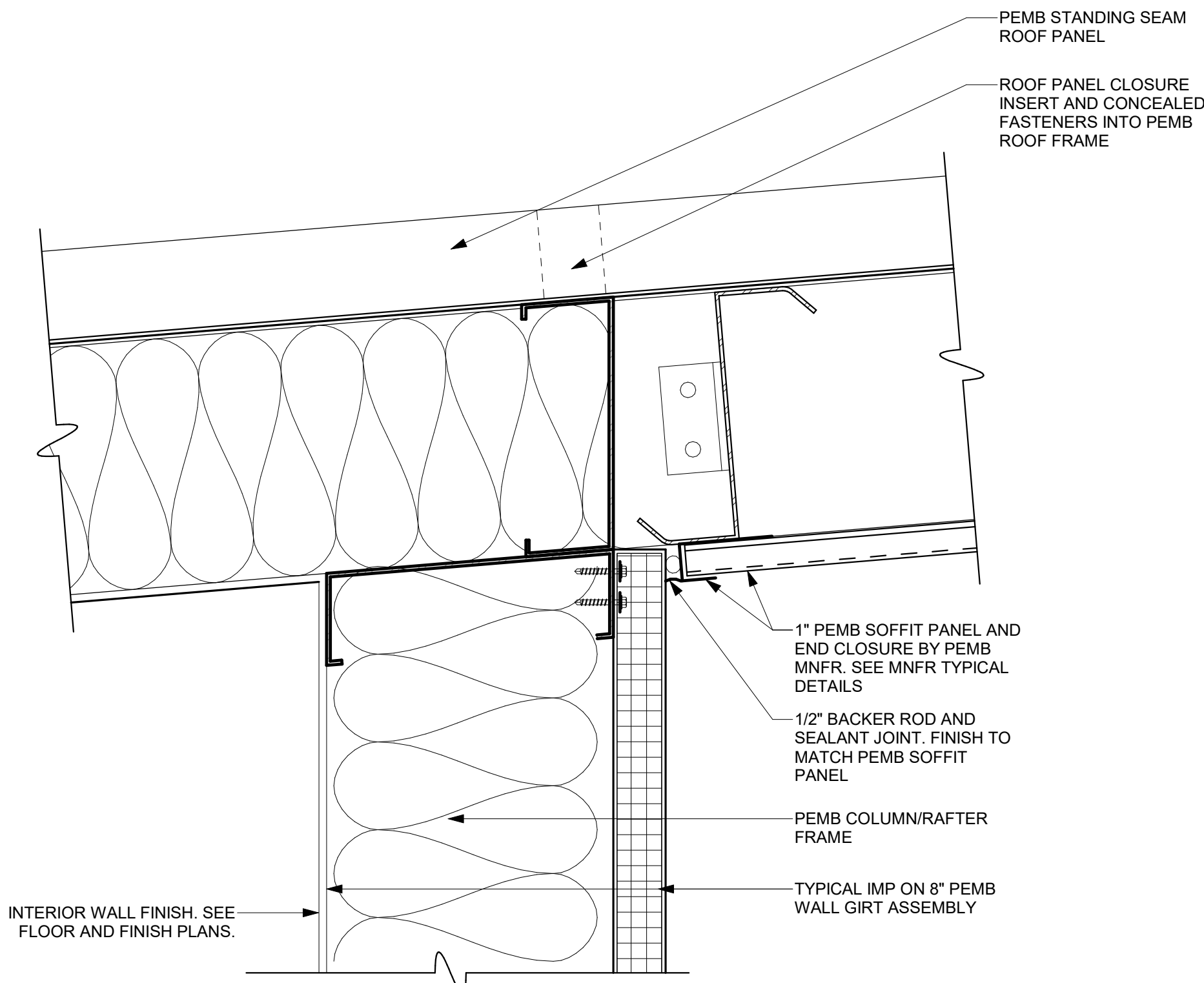


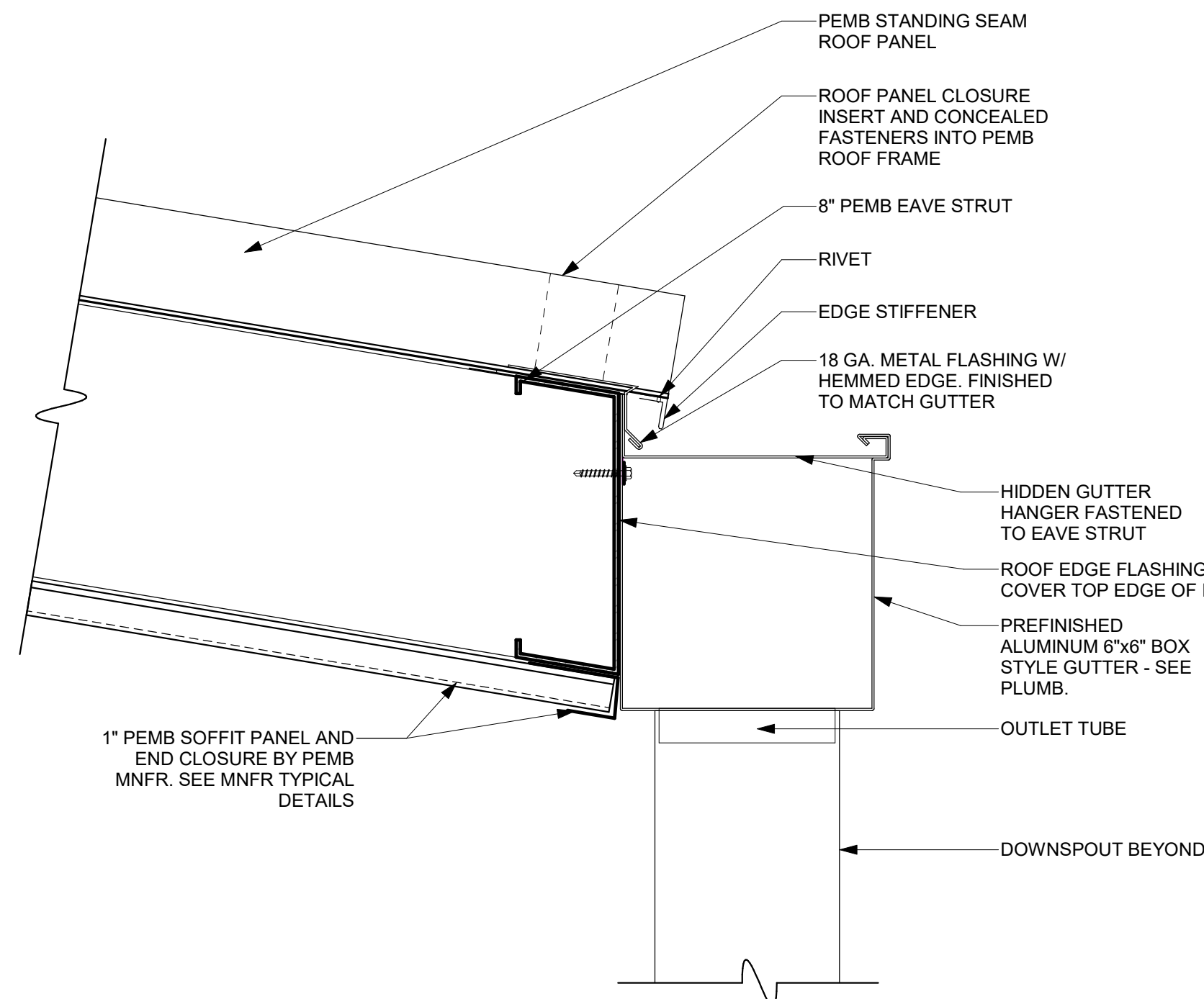
Copyright (c) 2025 Praxis3, LLC
All reports, plans, specifications, computer files, field data, notes and other documents and instruments prepared by Praxis3 and retain all copyright law, statutory and other intellectual rights, including copyright therein.
This drawing may not be reproduced in whole or in part without written permission of Praxis3. It is to be returned upon request. Scale as noted are valid on the original drawing.

Rev	Date	Comments
	05/22/26	PERMIT & BID

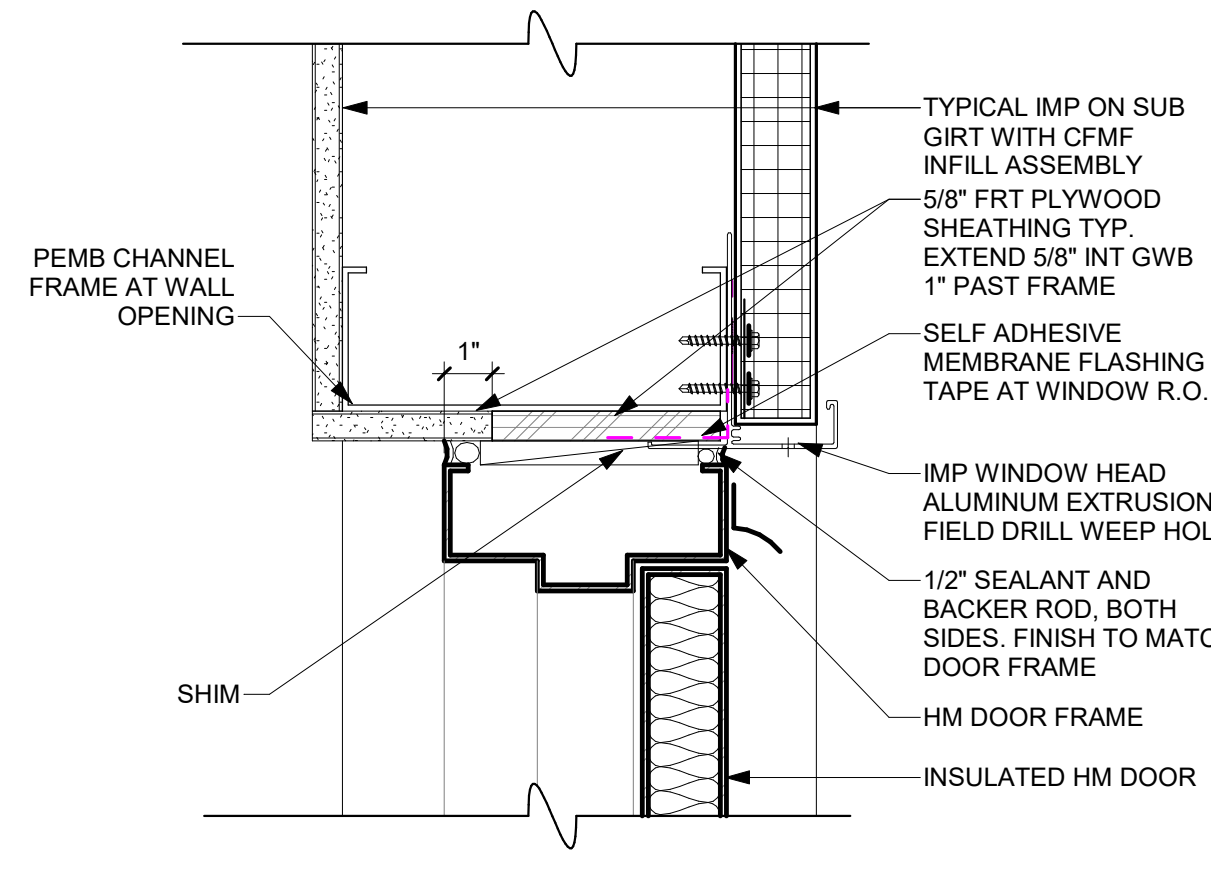
NOTE
ALL EXTERIOR EXPOSED PEMB FRAMING COMPONENTS TO BE PAINTED EP-1 UNO
INSULATED METAL PANEL (IMP) BASIS OF DESIGN: KINGSPAN BENCHMARK DW-2000 VERTICAL INSTALLATION. DETAILS SHOWN ARE BASED ON MANUFACTURER'S STANDARD EXTRUSION PROFILE OPTION AT PANEL TERMINATIONS: HEAD, SILL, AND JAMB. ALTERNATE DW-2000 OPTION IS MANUFACTURER'S TWO PIECE FLASHING CONDITION IN LIEU OF EXTRUSION. DETAILS MAY VARY BASED ON MANUFACTURER. MANUFACTURER DETAILS AND OPTIONS TO BE SUBMITTED IN SHOP DRAWING PHASE FOR ARCHITECT REVIEW AND APPROVAL. SEE SPECIFICATIONS FOR ADDITIONAL APPROVED MANUFACTURERS.



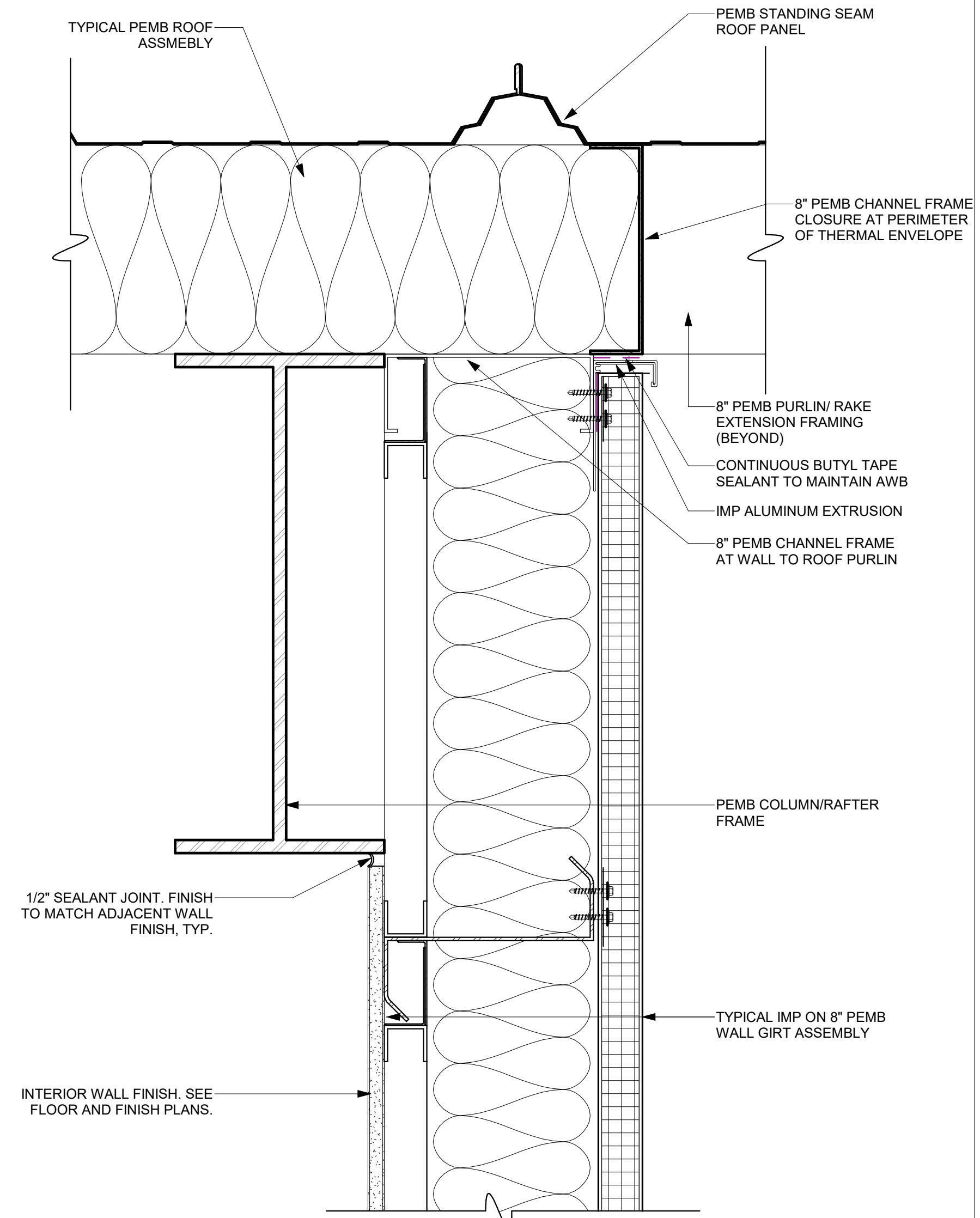
12 IMP ON PEMB WALL GIRT AT ROOF CANTILEVER
A680-I 3" = 1'-0"



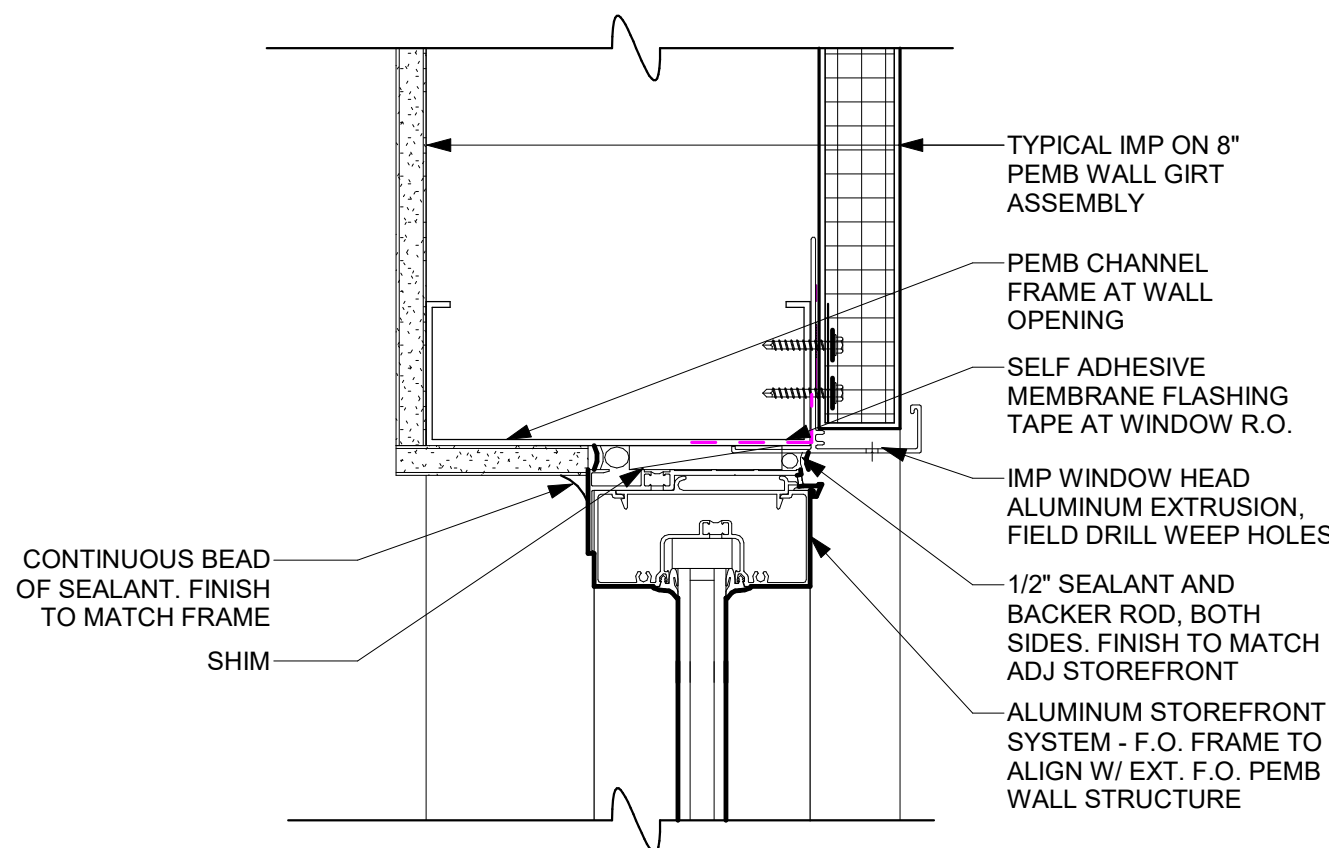
11 IMP ON PEMB WALL GIRT AT ROOF GUTTER
A680-I 3" = 1'-0"



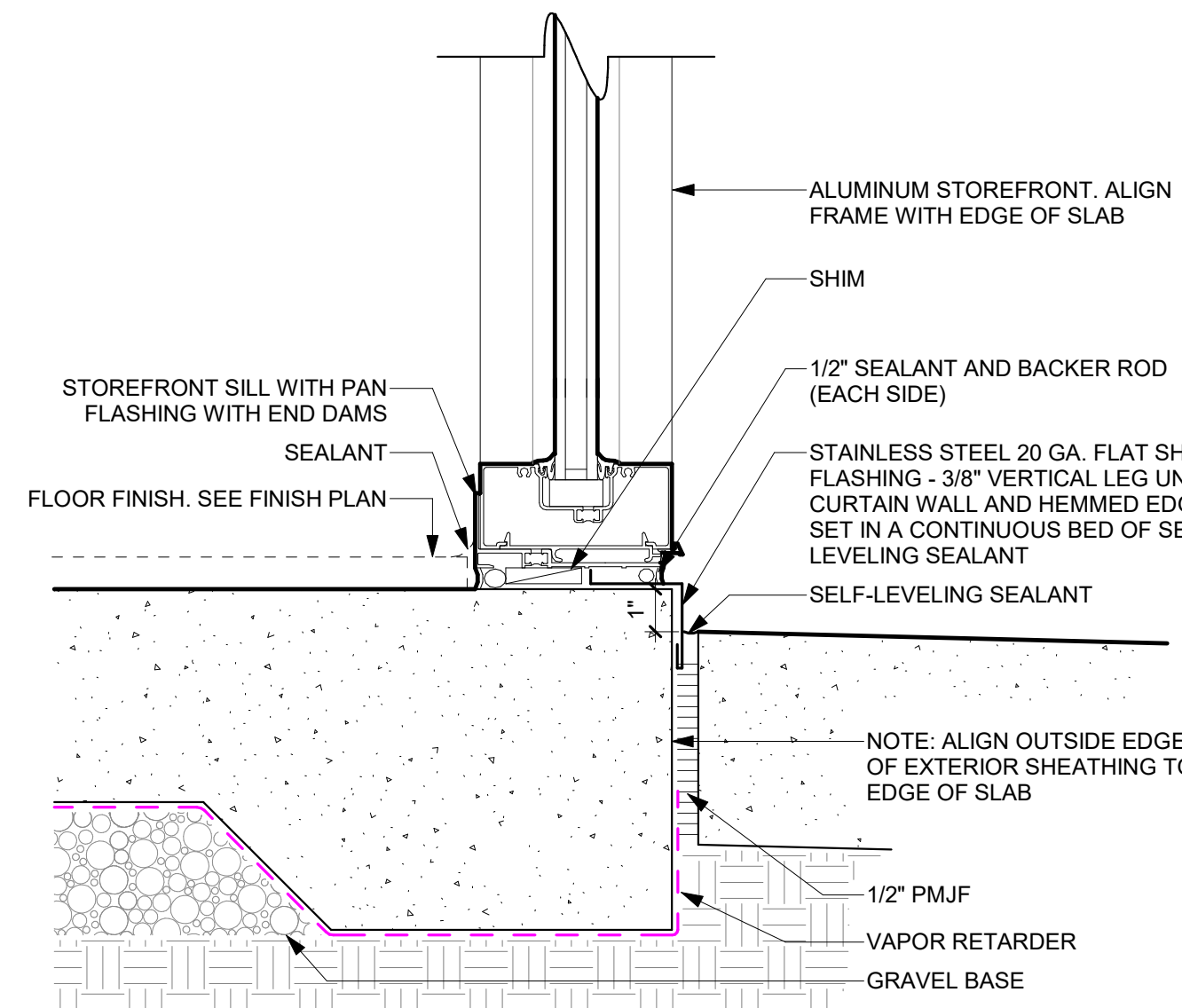
10 IMP ON PEMB WALL GIRT AT HM DOOR HEAD
A680-I 3" = 1'-0"



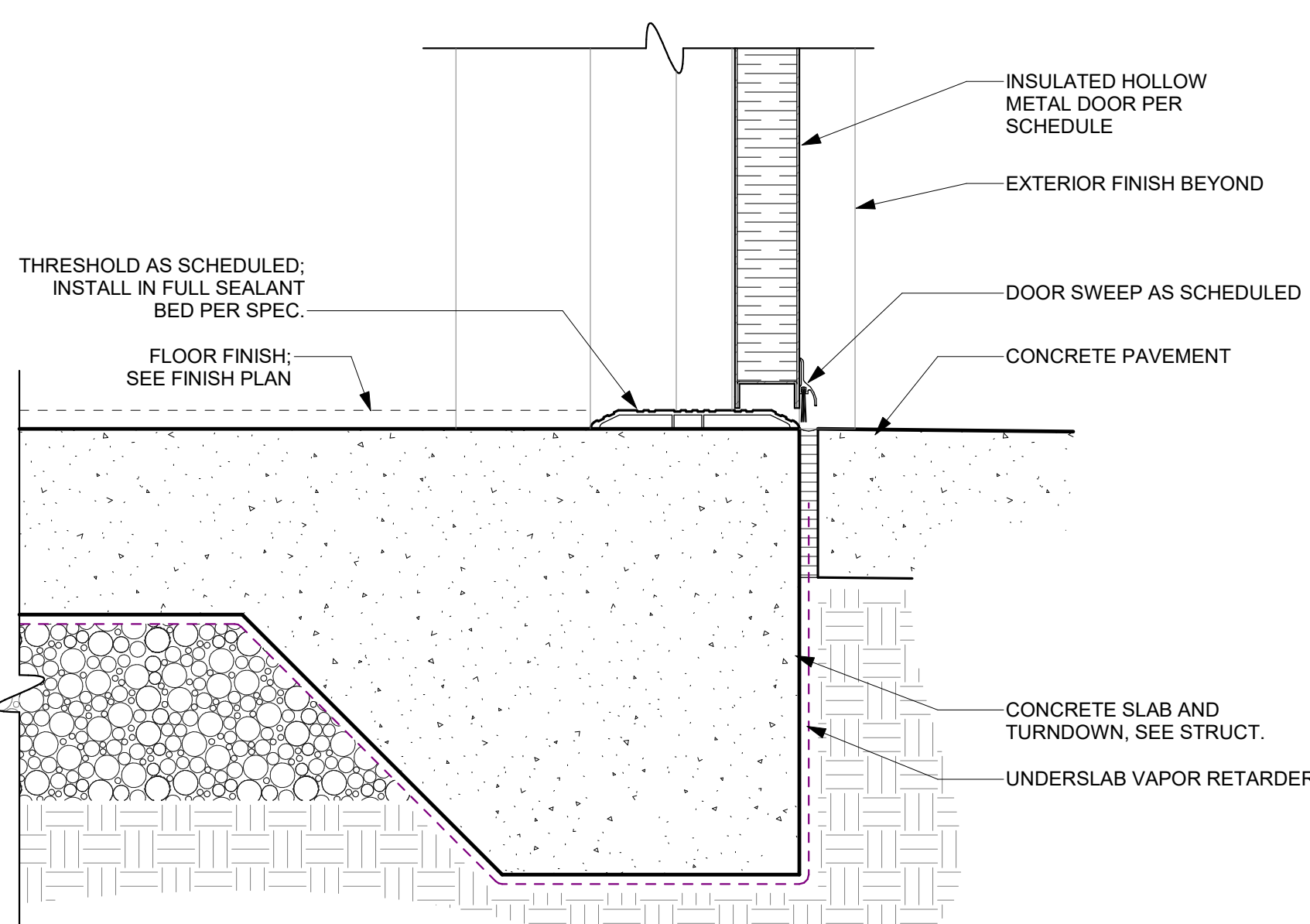
9 IMP ON PEMB WALL GIRT AT ROOF TERMINATION
A680-I 3" = 1'-0"



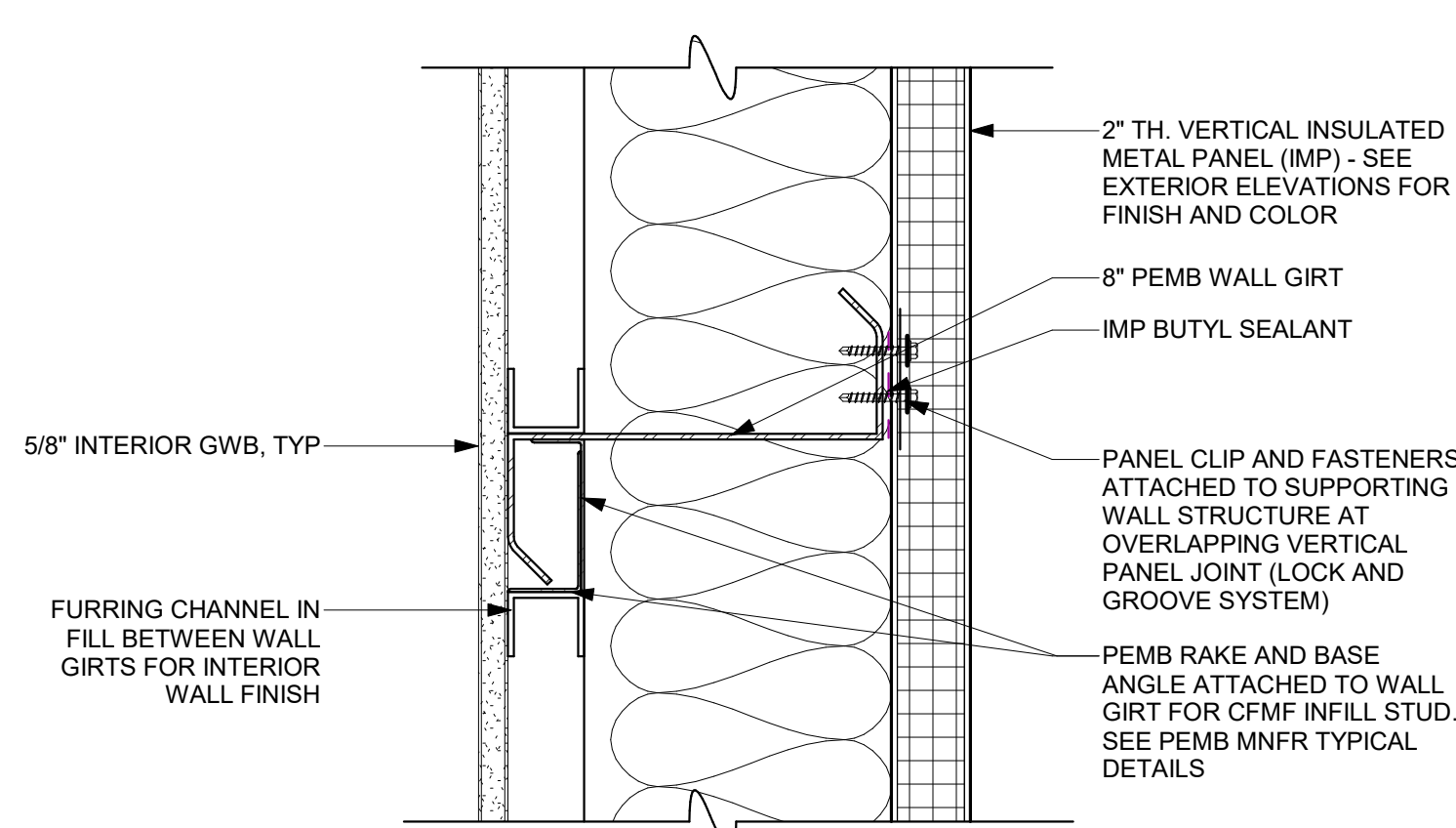
8 IMP ON PEMB WALL GIRT AT SF HEAD
A680-I 3" = 1'-0"



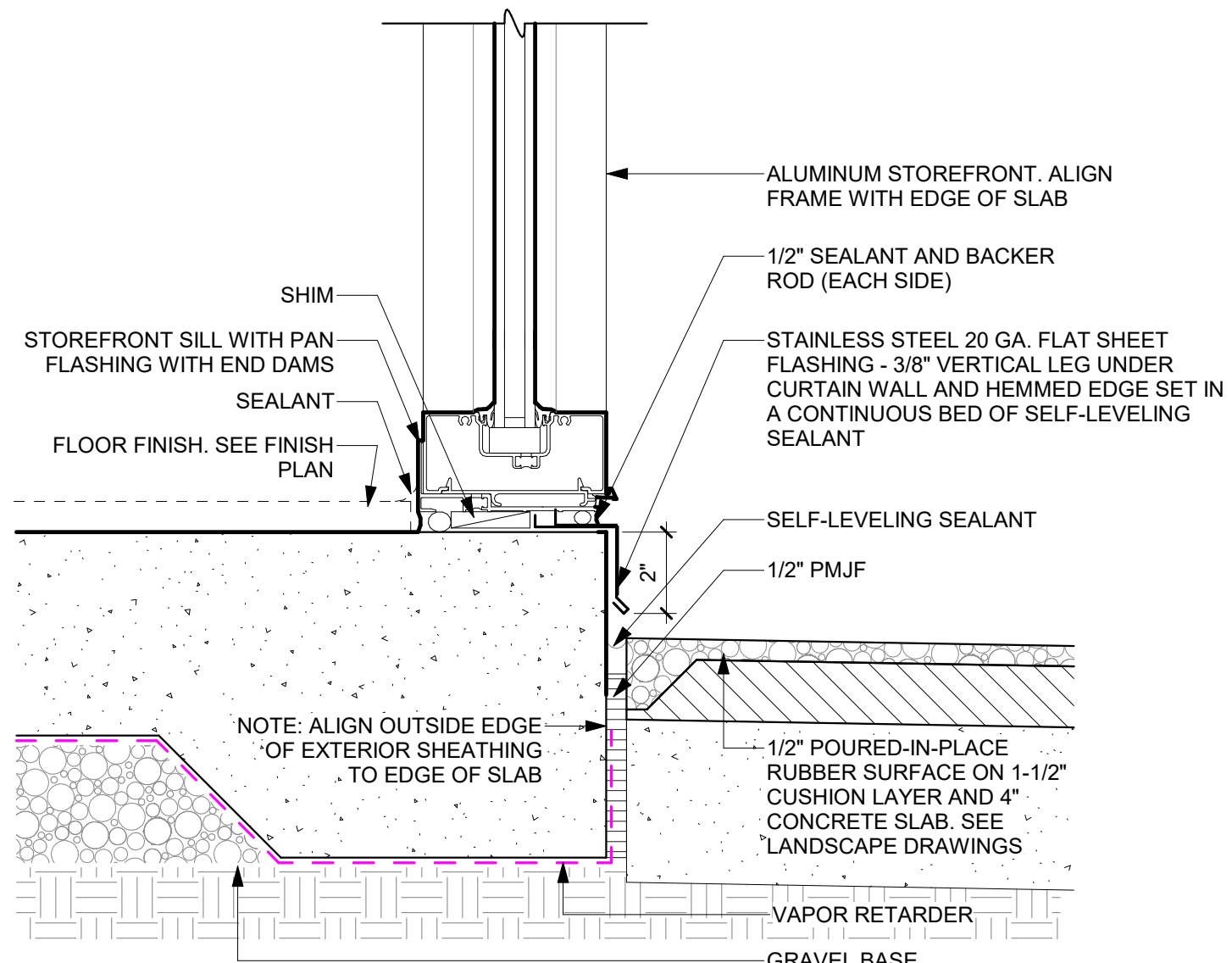
7 SF SLAB ON CONC APRON
A680-I 3" = 1'-0"



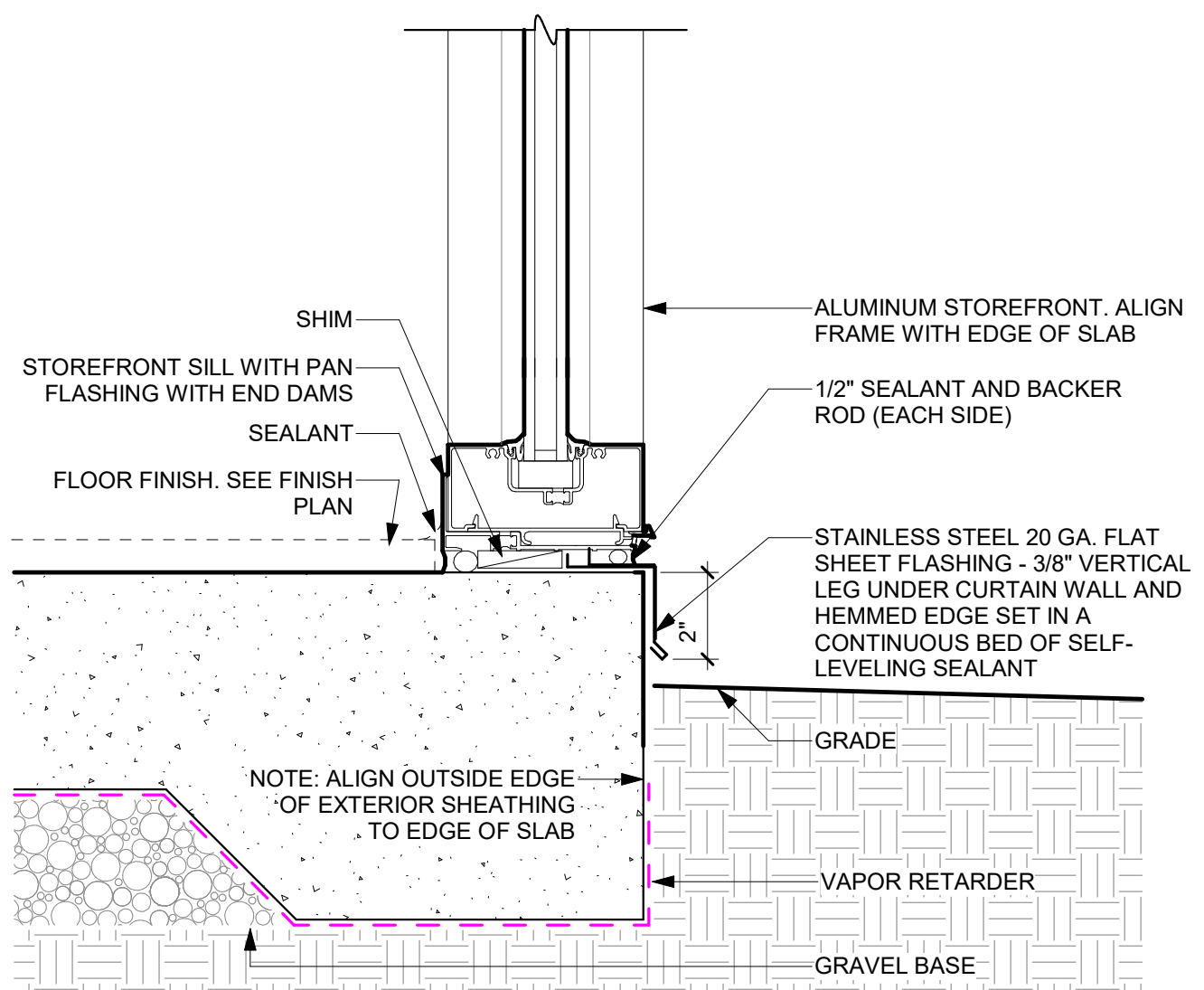
6 SLAB AT HM DOOR
A680-I 3" = 1'-0"



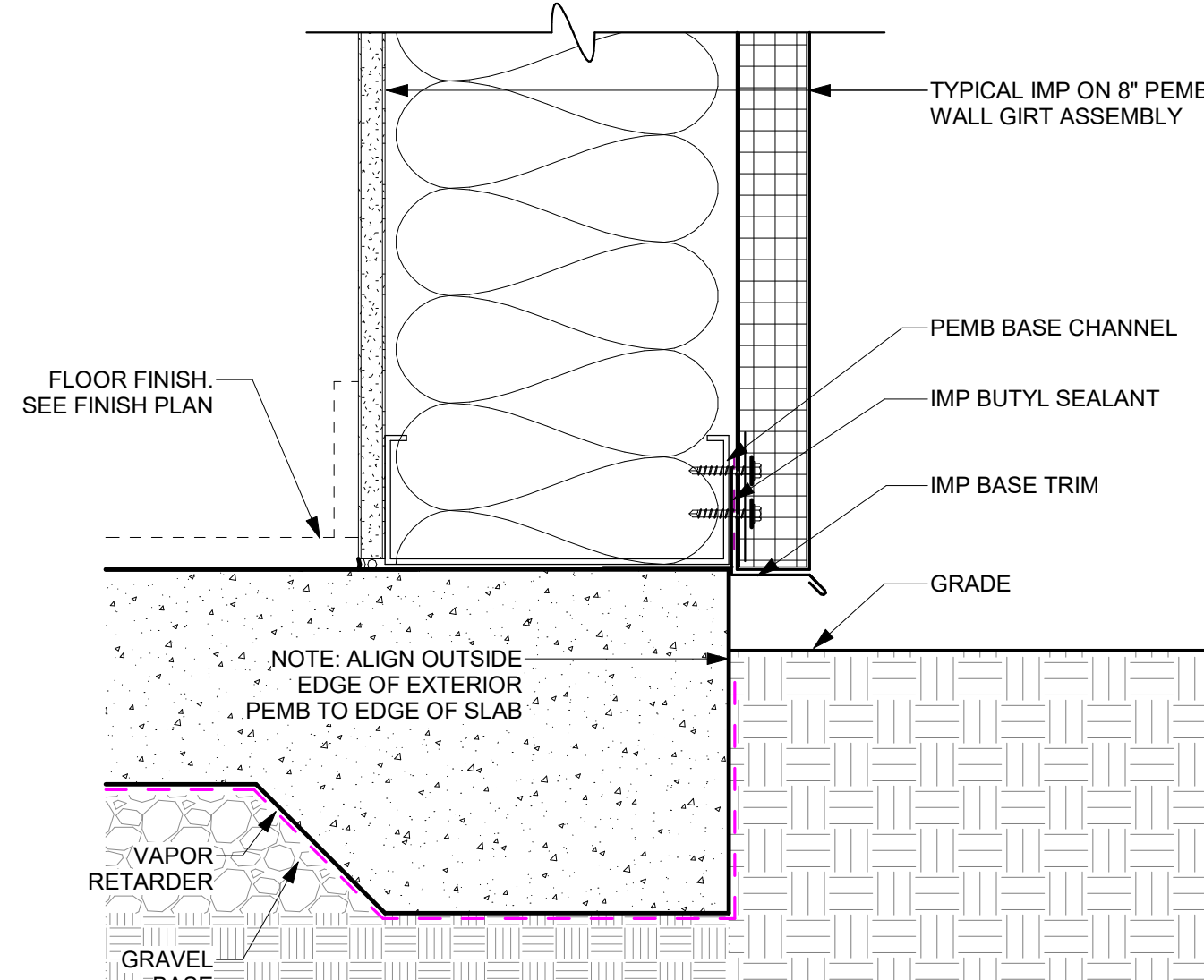
5 TYPICAL IMP ON PEMB WALL GIRT ASEMBLY
A680-I 3" = 1'-0"



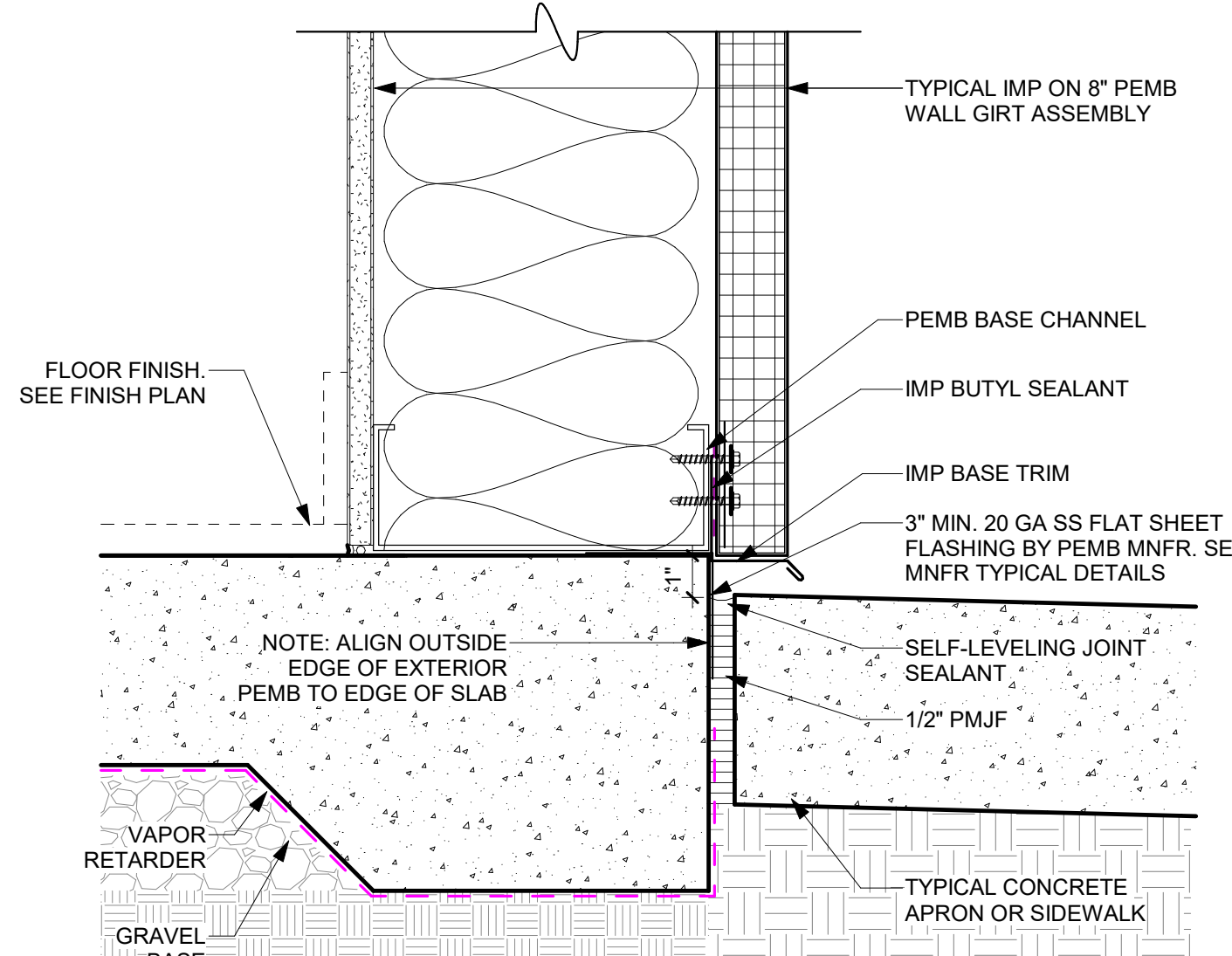
4 SF SLAB AT RUBBER PLAY SURFACE
A680-I 3" = 1'-0"



3 SF SLAB AT GRADE
A680-I 3" = 1'-0"



2 IMP ON PEMB WALL GIRT AT GRADE
A680-I 3" = 1'-0"



1 IMP ON PEMB WALL GIRT AT EXTERIOR CONC
A680-I 3" = 1'-0"

Client:
Fannin County

370 Tom Boyd Road
Blue Ridge, Georgia 30513

Project Number: 24184
Project Name:

Fannin County Rec. Center - Phase I

580 Winding Drive
Blue Ridge, Georgia 30513

Key Plan:

Sheet Title:
Section Details

Sheet Number:

A680-I